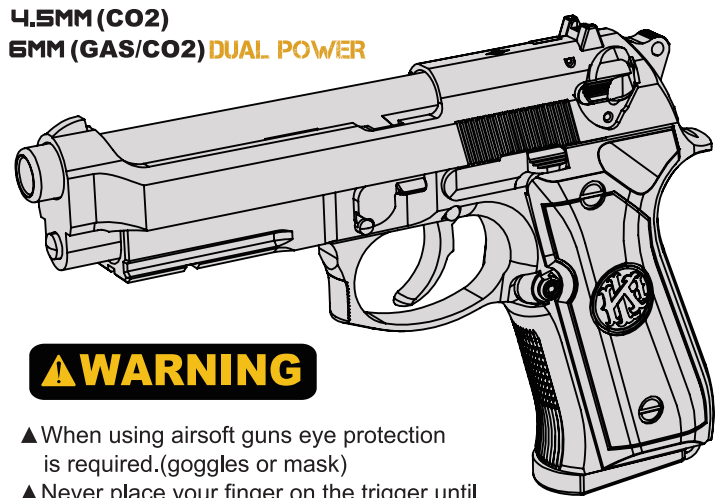




KL92 SERIES PISTOL USER GUIDE

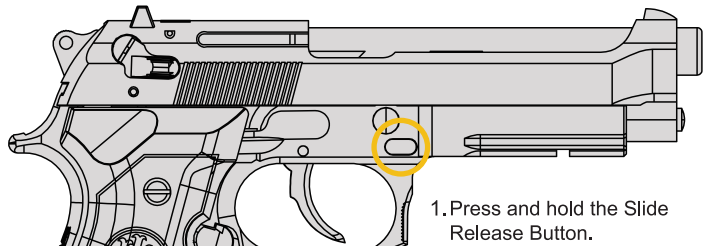
4.5MM (CO2)
6MM (GAS/CO2) DUAL POWER



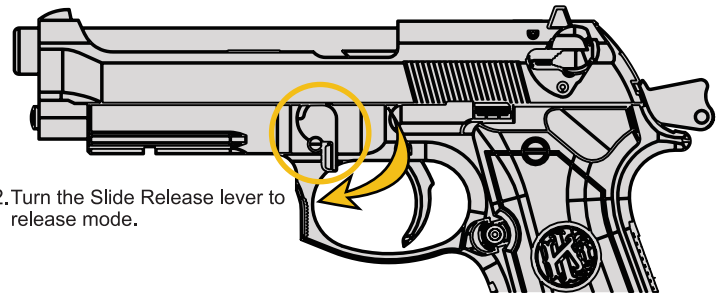
▲WARNING

- ▲ When using airsoft guns eye protection is required.(goggles or mask)
- ▲ Never place your finger on the trigger until you are ready to fire the gun. Alway put the gun in safe mode when not in use. Tread every gun as if it is loaded.
- ▲ Please keep away from children.
- ▲ BBs may remain in the barrel after magazine removal. To avoid injury, never look directly into the barrel and ensure the gun is always pointed in safe direction.
- ▲ Disassembly or modification of this product may result in damage to your Airsoft gun, loss of warranty, and/or serious injury.
- ▲ Please select a safe place to fire your airsoft gun. Always know your state and local laws concerning airsoft gun use.
- ▲ Do not aim or shoot at humans, animals, buildings, or vehicies.
- ▲ Please use a firearm case or bag when transporting your airsoft gun.

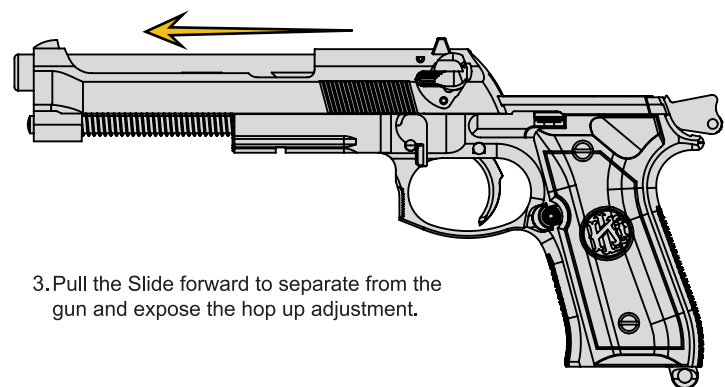
DISAEMBLE SLIDE



1. Press and hold the Slide Release Button.

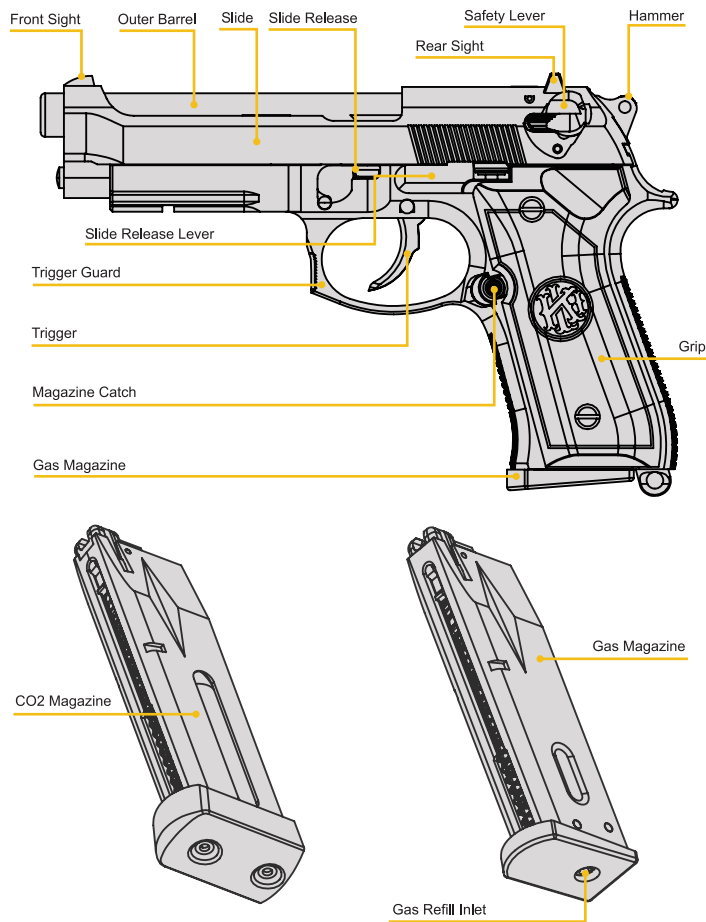


2. Turn the Slide Release lever to release mode.



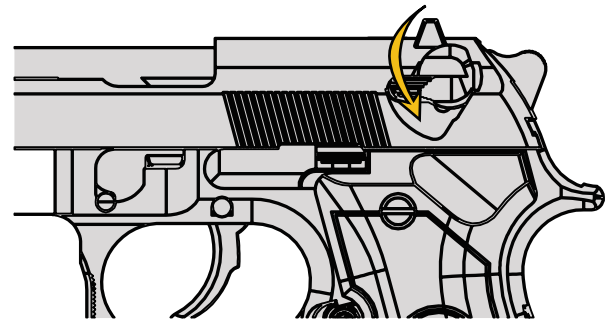
3. Pull the Slide forward to separate from the gun and expose the hop up adjustment.

KL92 PARTS DESCRIPTION

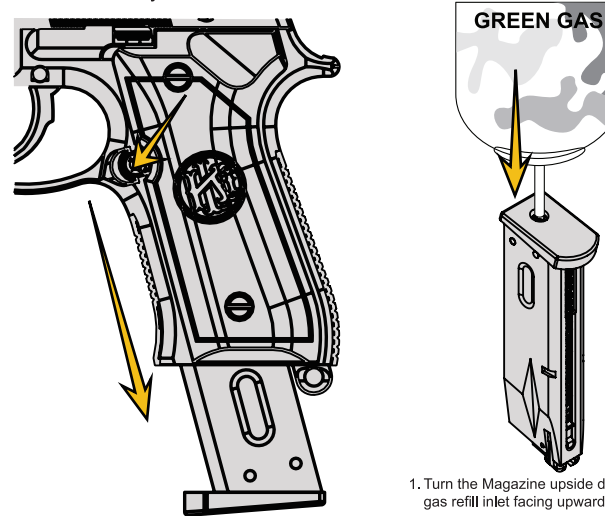


GAS INJECTION

Safety and Magazine Removal



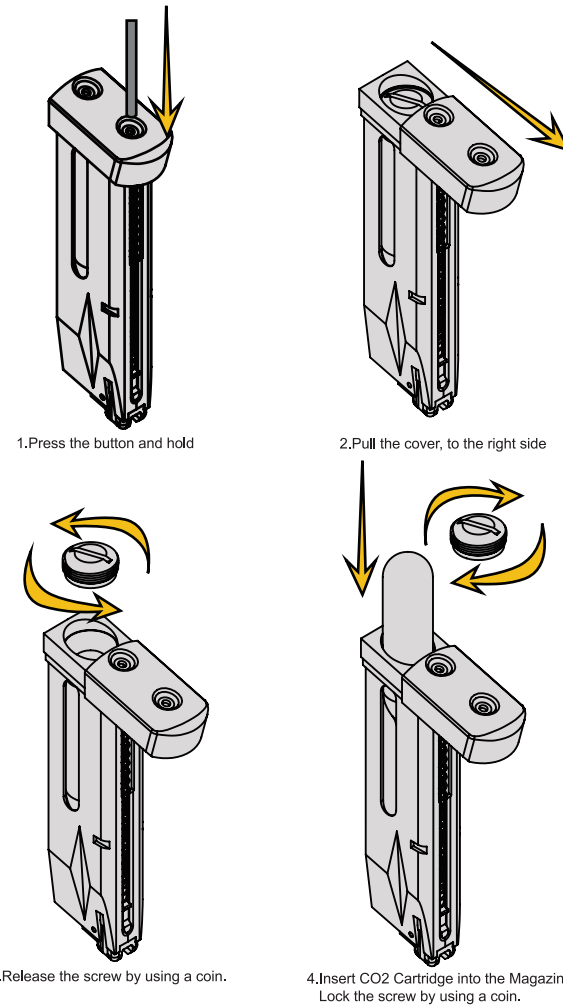
Turn the Safety Lever Selector to safe mode



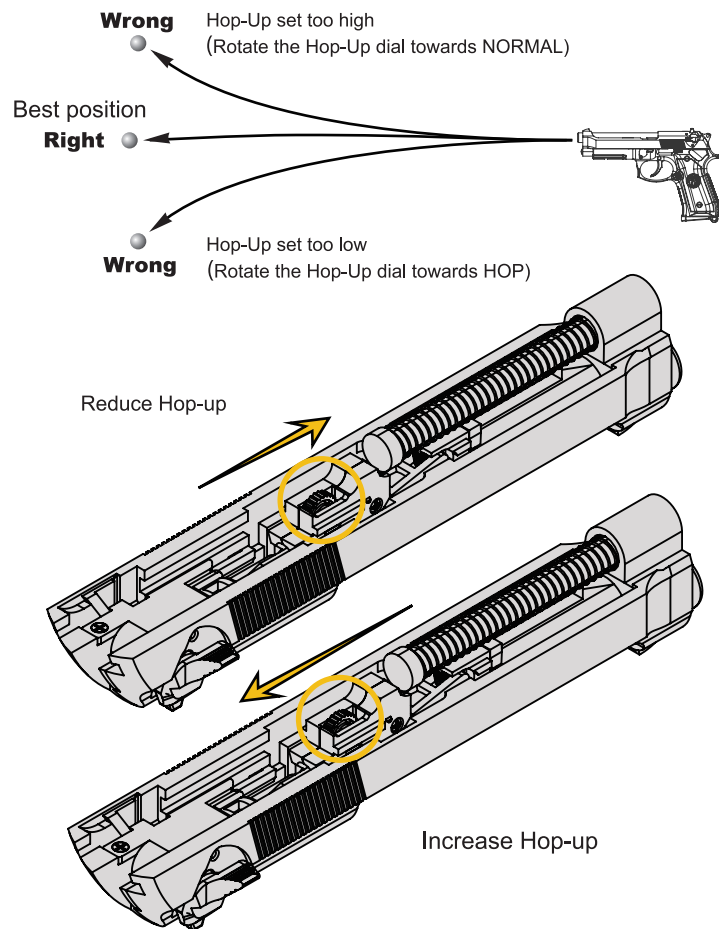
1. Press the Magazine Catch.
2. Remove the Magazine.

1. Turn the Magazine upside down with gas refill inlet facing upwards.
2. Keeping the gas cylinder inverted and vertical to the Magazine, inject gas until completely filled.

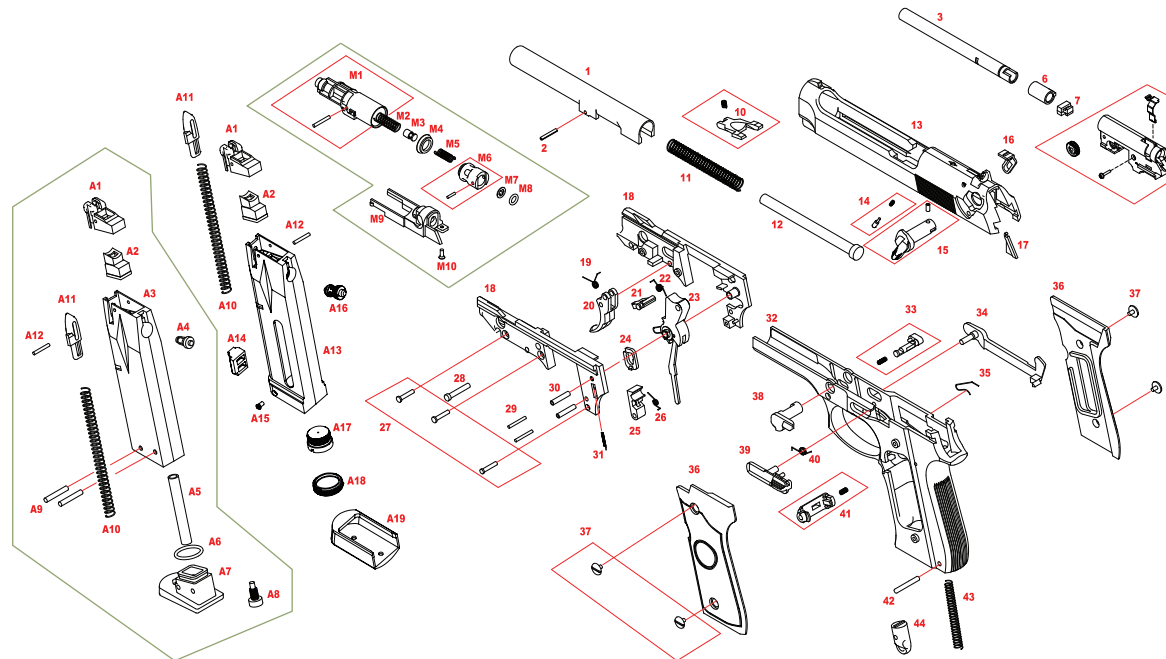
INSTALL CO2 CARTRIDGE



HOP-UP ADJUSTMENT (6mm)



KL92 SCHEMATIC (DUAL POWER SYSTEM)



NO	DESCRIPTION
1	Outer Barrel
2	Barrel Pin
3	Inner Barrel
6	Cushion
7	Hop Up Bucking
8	Hop Up Chamber
10	Barrel Lock
11	Recoil Spring
12	Recoil Spring Guide
13	Slide
14	Safety Lever Lock
15	Safety Lever - L
16	Safety Lever - R
17	Safety Lever Bar
18	Trigger Base
19	Trigger Spring
20	Trigger
21	Hammer lever
22	Hammer lever Spring
23	Hammer
24	Stop Plate
25	Shear
26	Shear Spring
27	Screw

NO	DESCRIPTION
28	Trigger Pin
29	Pin
30	Brass Tube
31	Stop Plate Spring
32	Frame
33	Slide Release Button
34	Triger
35	Trigger Link
36	Grip

NO	DESCRIPTION
37	Grip Screw
38	Slide Release lever
39	Slide Stop
40	Slide Stop Spring
41	Magazine Release Button
42	Pin
43	Hammer Spring
44	Hammer Spring Cover

Air Nozzle set	
NO	DESCRIPTION
M1	Air Nozzle
M2	Air Valve Spring
M3	Air Valve
M4	Piston Ring
M5	Air Nozzle Spring
M6	Piston
M7 / M8	CS / O Ring
M9	Cylinder Base
M10	Screw

Magazine set	
NO	DESCRIPTION
A1	Magazine Lip
A2	Air Valve Rubber
A3	Magazine Frame
A4	Valve
A5	Nebulization Tube
A6	O Ring
A7	Gas Magazine Base
A8	Gas Valve
A9 / A12	Pin

Magazine set	
NO	DESCRIPTION
A10	Magazine Spring
A11	Magazine Bar
A13	CO2 Magazine Frame
A14	Magazine Frame Stopper
A15	Screw
A16	CO2 Magazine Valve
A17	Cartridge Stab
A18	Cartridge Base Cover
A19	Magazine Bottom