



KL-1911 SERIES PISTOL USER GUIDE

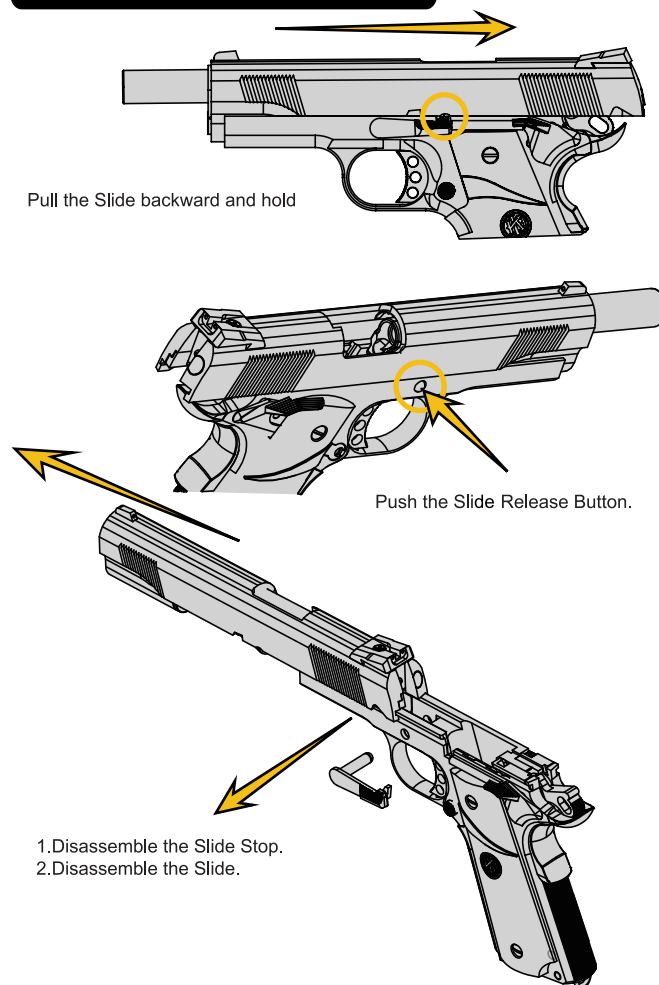
4.5MM / 6MM PISTOL
GAS VERSION / CO2 VERSION



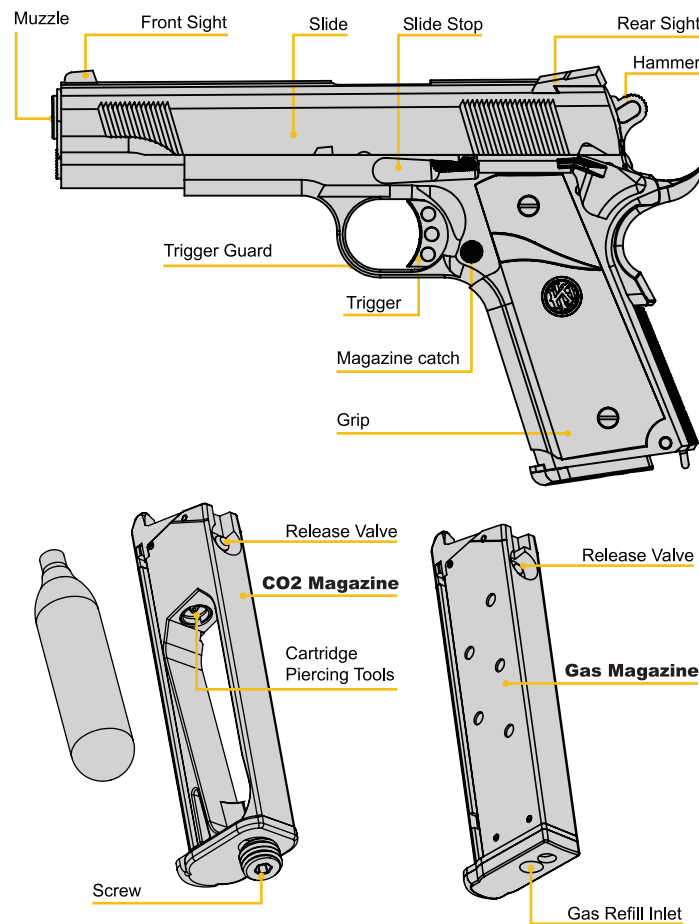
⚠ WARNING

- ▲ When using airsoft guns eye protection is required.(goggles or mask)
- ▲ Never place your finger on the trigger until you are ready to fire the gun. Always put the gun in safe mode when not in use. Treat every gun as if it is loaded.
- ▲ Please keep away from children.
- ▲ BBs may remain in the barrel after magazine removal. To avoid injury, never look directly into the barrel and ensure the gun is always pointed in safe direction.
- ▲ Disassembly or modification of this product may result in damage to your Airsoft gun, loss of warranty, and/or serious injury.
- ▲ Please select a safe place to fire your airsoft gun. Always know your state and local laws concerning airsoft gun use.
- ▲ Do not aim or shoot at humans, animals, buildings, or vehicles.
- ▲ Please use a firearm case or bag when transporting your airsoft gun.

DISAEMBLE SLIDE

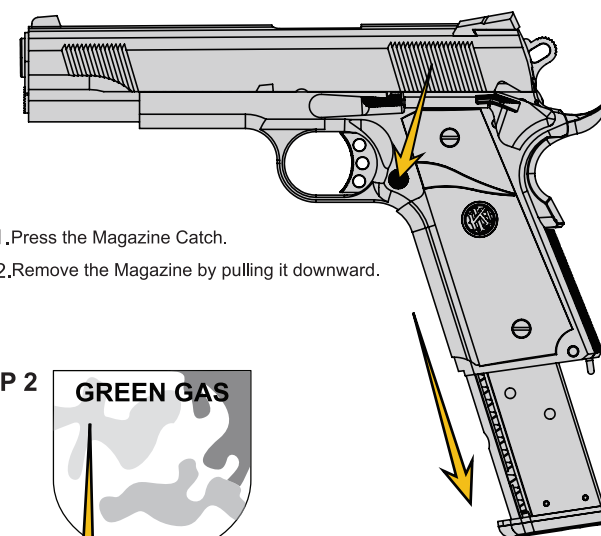


KL-1911 PARTS DESCRIPTION



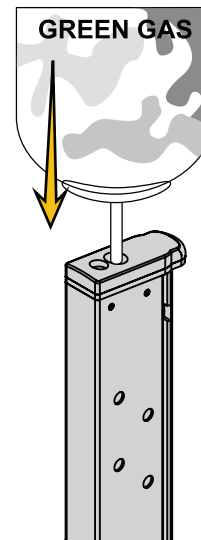
GAS INJECTION

STEP 1



- 1.Press the Magazine Catch.
- 2.Remove the Magazine by pulling it downward.

STEP 2



1. Turn the Magazine upside down with gas refill inlet facing upwards.
2. Keeping the gas cylinder inverted and vertical to the Magazine,inject gas until completely filled.

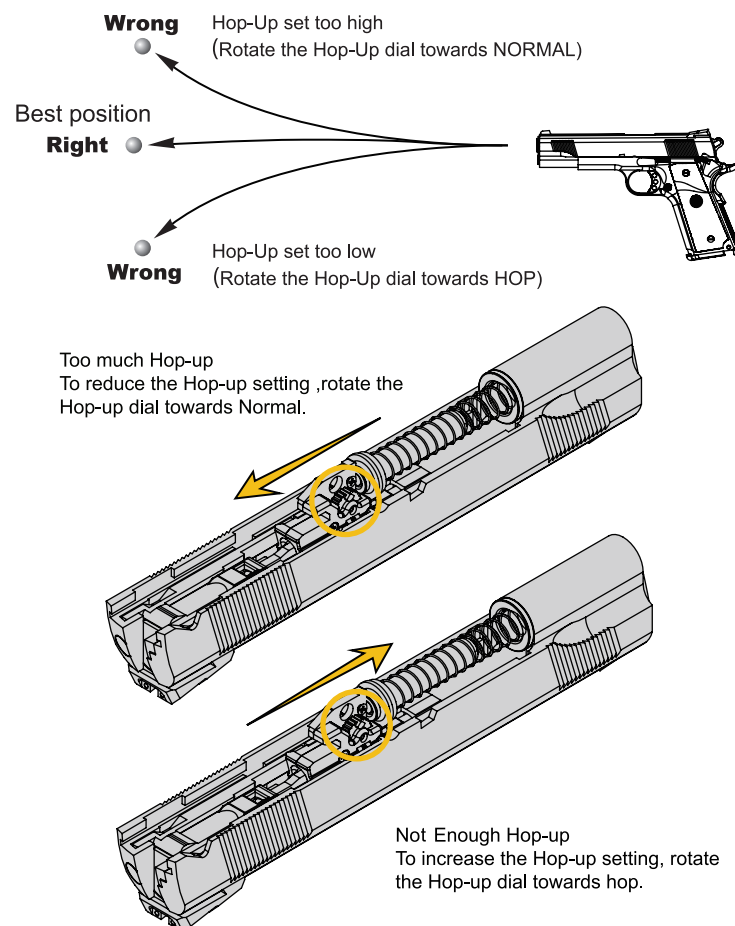
Loading BB Bullets

Load BBs into the Magazine as show above.

INSTALL CO2 CARTRIDGE

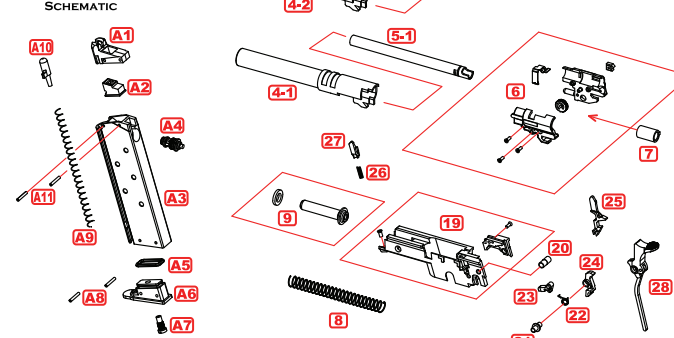
1. Turn the Screw clockwise to puncture the CO2 Cartridge Loading.
2. Loading BBs.

HOP-UP ADJUSTMENT (6mm)

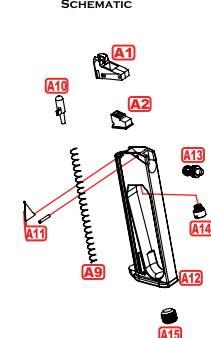


KL-1911 SCHEMATIC GAS / CO2 Ver.

GAS MAGAZINE SCHEMATIC



CO2 MAGAZINE SCHEMATIC



NO	DESCRIPTION
A1	Magazine Lip
A2	Air Nozzle Rubber
A3	Magazine Frame
A4	Valve (Gas Ver.)
A5	O Ring
A6	Magazine base
A7	Gas Valve
A8	Pin
A9	Magazine Spring
A10	Magazine Bar
A11	Pin
A12	Magazine Frame(CO2 Ver.)
A13	Valve (CO2 Ver.)
A14	Cartridge Stab (CO2 Ver.)
A15	Screw

NO	DESCRIPTION
1	Barrel Bearing
2	Slide
3	Recoil Spring plug
4-1	Outer Barrel(Longest Ver.)
4-2	Outer Barrel(Shorty Ver.)
5-1	Inner Barrel(Longest Ver.)
5-2	Inner Barrel(Shorty Ver.)
6	Hop Up Chamber
7	Hop Up Bucking
8	Recoil Spring
9	Recoil Spring Guide
10	Air Nozzle (Gas Ver.)
11	Piston O Ring
12	Screw & O Ring
13	Piston
14	Nozzle Spring
15	Valve (CO2 Ver.)
16	Plunger base
17	Firing pin Spring
18	Dummy Firing pin

NO	DESCRIPTION
19	Hammer base
20	Hammer Axle
21	Sear base
22	Sear Spring
23	Impact pin
24	Sear
25	Disconnecter
26	Shear Spring
27	Shear
28	Hammer set
29	Trigger
30	Magazine catch
31	Lower Receiver(Gas Ver.)
32	Hammer pin
33	Sear pin
34	Plunger base
35	Slide stop

www.krownland.com.tw

NO	DESCRIPTION
36	Grip safety
37	Mainspring Housing pin
38	Plunger set
39	Safety
40	Grip set
41	Grip screw
42	Sear Spring
43	Mainspring screw
44	Mainspring
45	Mainspring Housing
46	Lanyard mount
47	Firing pin stop
48	Grip set (CO2 Ver.)
49	Grip screw (CO2 Ver.)
50	Lower Receiver(CO2 Ver.)
51	Air Nozzle (CO2 Ver.)
52	Piston (CO2 Ver.)

sales@krownland.com.tw